



## CASE STUDY

Snow Melt Facility/ Storage Pond



- ▼ **LOCATION:** Fort McMurray, Alberta
- ▼ **PROJECT TYPE:** Supply and installation
- ▼ **PRODUCT USED:** LLDPE single sided liner, LLDPE double sided liner and 200mm depth Geocell- perforated cell

### ▼ **PROBLEM:**

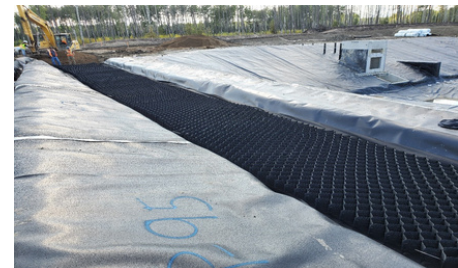
The City of Fort McMurray required the stabilization of an access road leading into a snow melt facility storage pond for dumping, and a platform to work off of if necessary.

### ▼ **THE TITAN SOLUTION:**

Titan supplied and installed LLDPE single sided liner, LLDPE double sided liner and 200mm depth Geocell- perforated cell. The Geocell was placed the full width of the designated roadway. To do this the crew installed one full panel width and cut another section of geocell to extend and reach the full width of the roadway. The system was anchored at the top of the roadway as pinning into the subgrade wasn't possible due to the liner below. The contractor then backfilled with sand from top to bottom once the install was complete.

### ▼ **ACHIEVEMENT:**

Titan was chosen for this project because of our attention to customer needs, our focus on service and our ability to provide site support during installation. The Geocell was incorporated into this design due to our recommendation as a solution for the road access issues.



Contact us for more information:

**TITAN ENVIRONMENTAL CONTAINMENT**

Toll free: 1-866-327-1957 | Email: [info@titanenviro.com](mailto:info@titanenviro.com) | Web [www.titanenviro.com](http://www.titanenviro.com)

TRUST.QUALITY.VALUE