




-  July, 2020
-  CC13 bulk
-  # 500 Sq. m.
-  Transverse
-  Harrison Lake, BC
-  Kingston Construction
-  Outfall lining



In July 2020, 500 sq. m of 13mm bulk roll Concrete Canvas® (GCCM) was used to line an outfall at Harrison Lake, B.C., Canada. The installation was completed by Kingston Construction. The project location was remote with no road access therefore a barge was used to transport the CC bulk rolls and supplies to the site. This specific project hinged on the lake's water levels, meaning the installation could only take place once lake water levels dropped to a predetermined point, adding to the installation challenges. Site prep work included clearing the existing outfall of all debris, compacting the substrate, and installing lock blocks around the perimeter of the outfall. An excavator was used to dispense the CC bulk rolls. Once the rolls were unrolled and laid, both ends were secured with an anchor trench. The strip joints were then sealed using Soudaseal sealant and secured using 20mm screws at 200mm intervals along the overlaps.

Finally, CC was hydrated utilizing the lake water. Once completely hydrated, rip rap was strategically placed on top of the CC to act as a ballast where it meets the lake. CC was the clear choice for this project due logistical simplicity given the limited site access, it's ease of installation, rapid installation rate and performance longevity (120 year design life).



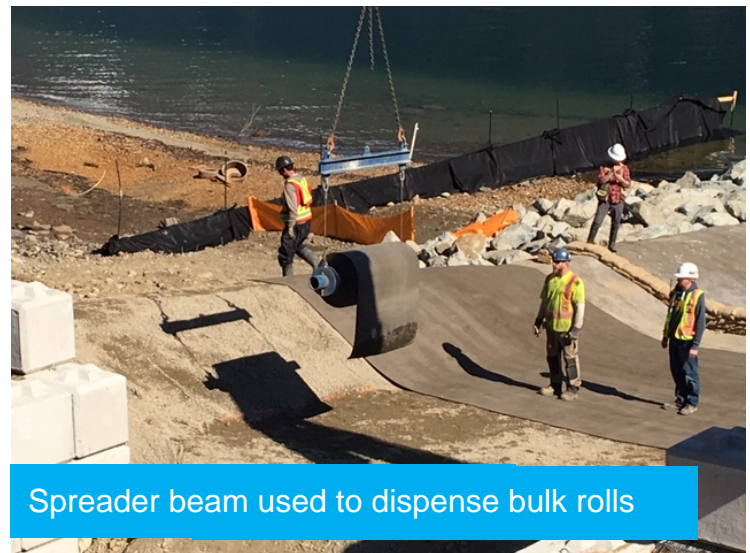
Graded and smoothed substrate



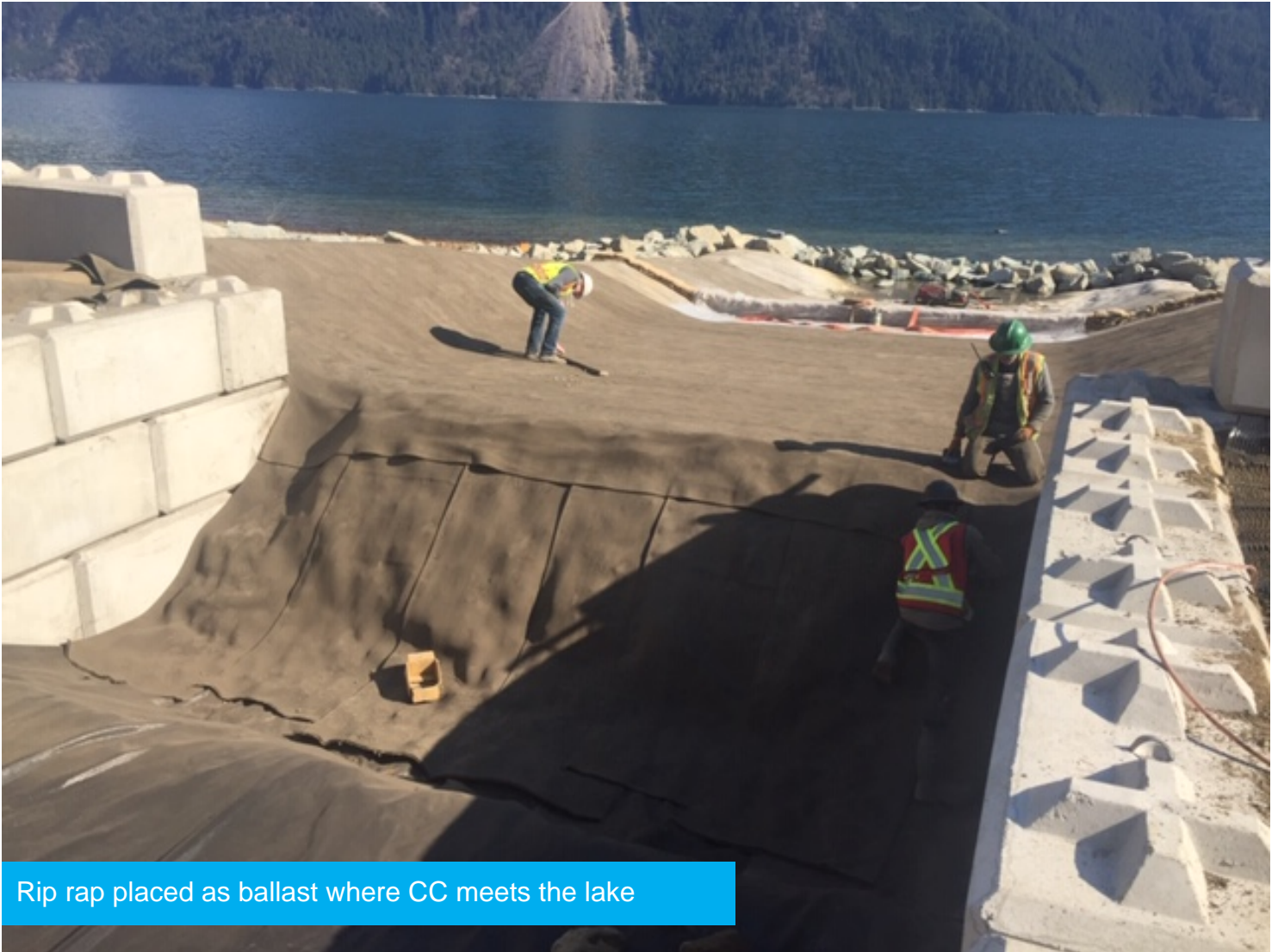
Dispensing of bulk rolls



Transverse lay up of CC



Spreader beam used to dispense bulk rolls



Rip rap placed as ballast where CC meets the lake



Rip rap used to dissipate water flow



Hydration of CC after installation